

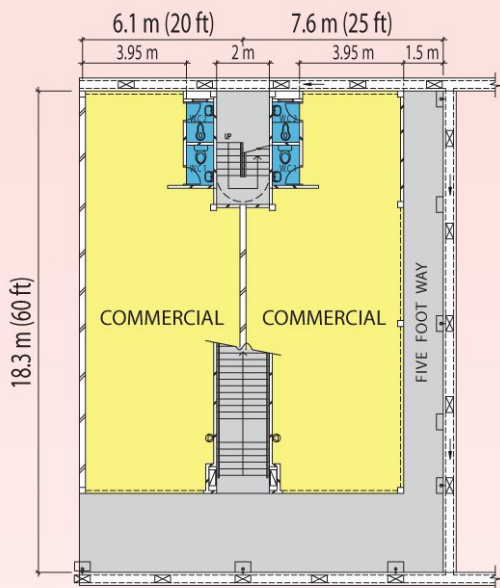
# Bandar Baru Kota Samarahan <sup>Phase 4</sup>

## 40 Units of 3-Storey Shophouses

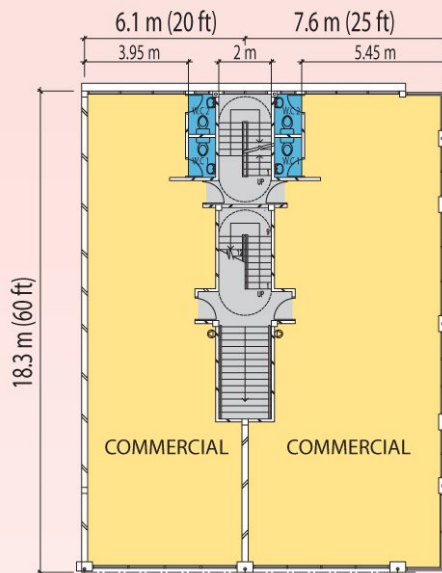


- ◆ Prime location within Bandar Baru Kota Samarahan.  
绝佳地点于三马拉汉新市镇。
- ◆ Close to government offices, Kota Samarahan.  
靠近三马拉汉市各政府部门办事处。
- ◆ Walking distance to proposed Samarahan Bus Terminal.  
与三马拉汉巴士站毗邻。
- ◆ Next to Taman Desa Damai.  
与Taman Desa Damai 毗邻。

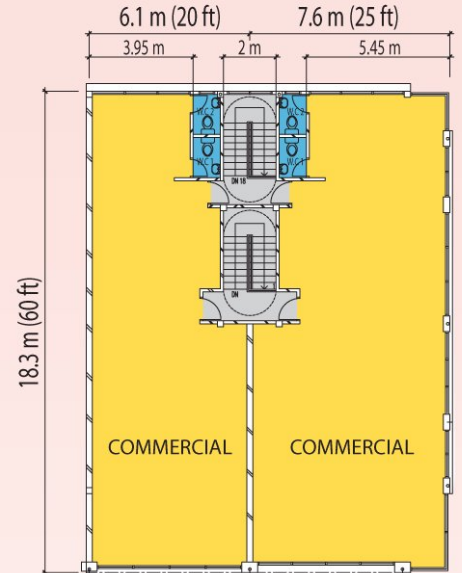




GROUND FLOOR PLAN



FIRST FLOOR PLAN



SECOND FLOOR PLAN

Legend:

Taman Desa Damai Phase 1

- Single Storey Semi-Detached Houses (8 Units)
- Single Storey Terrace Houses (38 Units)
- Double Storey Terrace Houses (20 Units)

Taman Desa Damai Phase 2

- Single Storey Semi-Detached Houses (6 Units)
- Double Storey Terrace Houses (16 Units)
- Single Storey Terrace Houses (28 Units)

Bandar Baru Kota Samarahan Phase 4

- 3 Storey Shophouses (40 Units)
- Proposed Petrol Station
- Samarahan Bus Terminal

# Bandar Baru Kota Samarahan Phase 4



Land Owner & Developer



**福平實業有限公司**

**HOCK PENG REALTY SDN BHD** (Company No. 20325-D)  
 (Property Development • CIDB Reg. Grade G7 Contractor) (A member of the Hock Peng Organisation)

Wisma Hock Peng, No. 123, Green Heights, Jalan Lapangan Terbang, 93250 Kuching, Sarawak, Malaysia.

Website: [www.hockpeng.com](http://www.hockpeng.com)

Tel: **082-573028** Fax: **082-573027** H/P: **012-8886831/012-8226668**



All illustrations, scale models, plans, drawings are artist impressions only and shall not form part of any offer or contract. The developer reserves the right to modify a part or parts of the development prior to completion without prior notice. Whilst every care has been taken in providing this information, the developer shall not be held responsible for any inaccuracies.